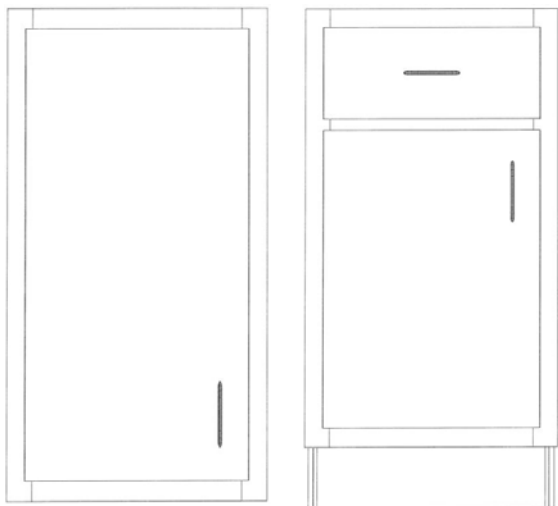
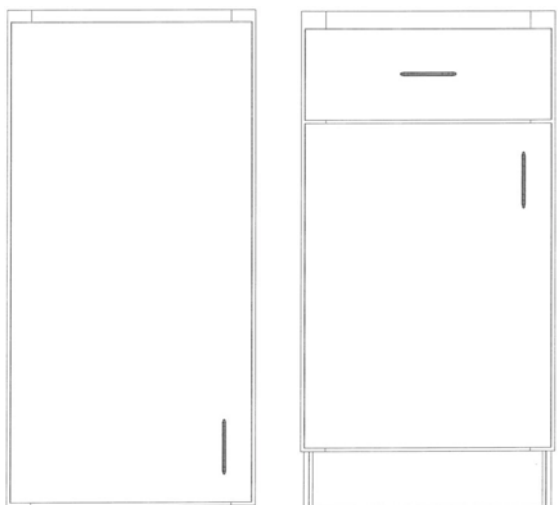


# FACE FRAME SPECIFICATIONS

Standard Overlay



Full Overlay



## Face Frame:

¾" solid hardwood – glued and screw doweled

*\*Optional*

## Case Construction Method:

Dados, glue and mechanical fasteners

## Case Materials:

⅝" particleboard

*\*⅝" MDF*

*\*⅝" formaldehyde-free particleboard*

*\*⅝" standard plywood*

*\*⅝" formaldehyde-free plywood*

## Shelves:

⅝" particleboard – all adjustable full depth

*\*Same options as Case Materials*

## Shelf Supports:

Metal pins in drilled system holes

## Interior Finish:

White melamine

## Finished Ends:

Matching melamine

*\*Wood veneer*

## Drawer Materials:

Drawer sides: ½" particleboard with wood grain melamine finish

*\*½" birch plywood*

Drawer bottoms: ¼" white melamine

*\*¼" birch plywood – only with birch sides option*

## Drawer Construction:

Butt joint with captive bottom

*\*Dovetail – only with birch plywood option*

## Drawer Guides:

Epoxy coat standard extension side-mount with 75 lb rating

*\*Full extension ball bearing side-mount with 100 lb rating*

*\*Full extension soft-close concealed under-mount with 100 lb rating*

## Hinges:

Salice 110° Standard Overlay (½") concealed hinge

Salice 110° Full Overlay (1-½") concealed hinge

## Finish on Wood Parts:

Ultra low VOC water-based spray stain and water-based high performance UV cured top coat finish. Urea-formaldehyde free.

## Doors:

Melamine

Wood Veneer with wood edge band

Solid wood

Solid wood frame with veneer recessed panels

Solid wood frame with solid wood panels

Thermofoil