



DOUBLEWALL METAL BOX WITH INTEGRATED DRAWER GUIDES



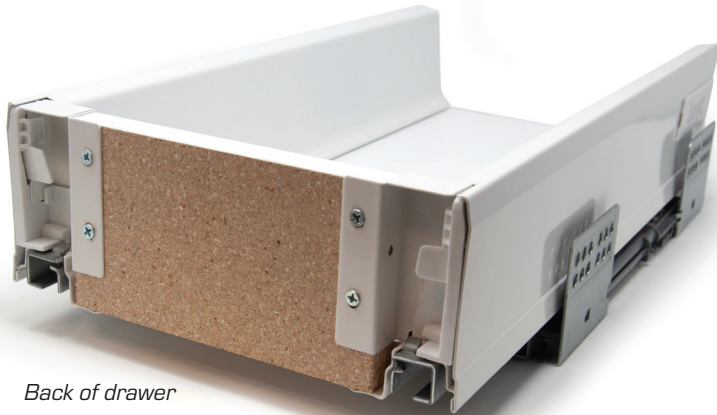
Standard drawer (2.75" high sides)



Deep drawer (4.75" high sides)

PRODUCT FEATURES

- Soft-close, silent system
- Full extension
- 100 lb. dynamic load capacity
- White double-walled metal sides, 5/8" particleboard back and bottom
- Full adjustment (up, down, left, right)
- 36" max drawer width
- 2.75" high sides, Deep drawer 4.75" high sides
- KCMA, BHMA, BIFMA



Back of drawer

The Kitchen Cabinet Manufacturers Association (KCMA) tests drawers and drawer guides with 15 pounds per square foot of drawer load and operates the drawer repeatedly (25,000 cycles) to test for durability and load handling capabilities. The drawers and guides we offer at Lanz Cabinets are designed to meet or exceed these specifications. Please see your chosen guide for actual details and limitations.